

# MARS400S

A Multiple Platforms Wireless Monitoring System



APP Monitoring



OLED Display Screen



SDI & HDMI



3 Application Scene Modes



Low-Battery Warning Indicator

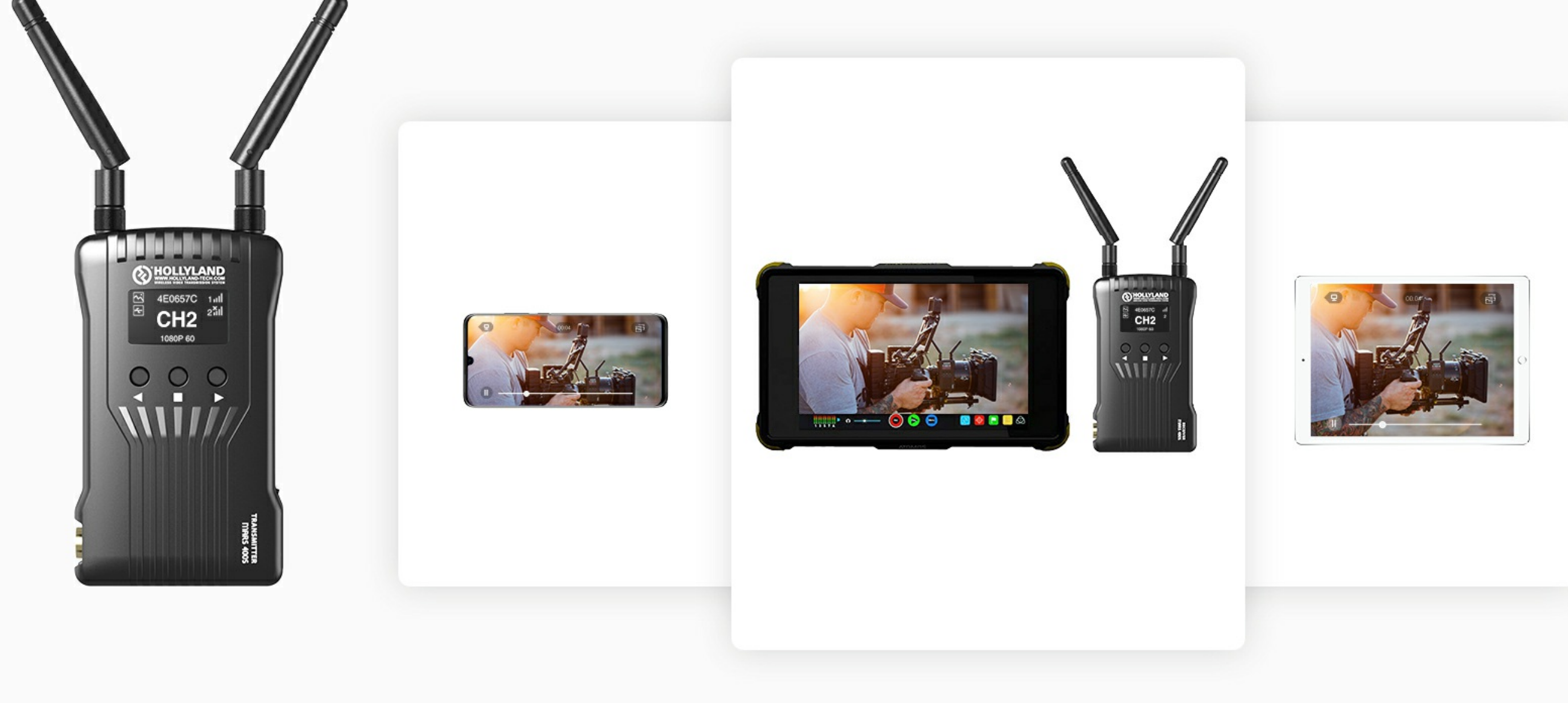
## OLED Display Screen

Check out all device status and control the system with displayed information on the screen.



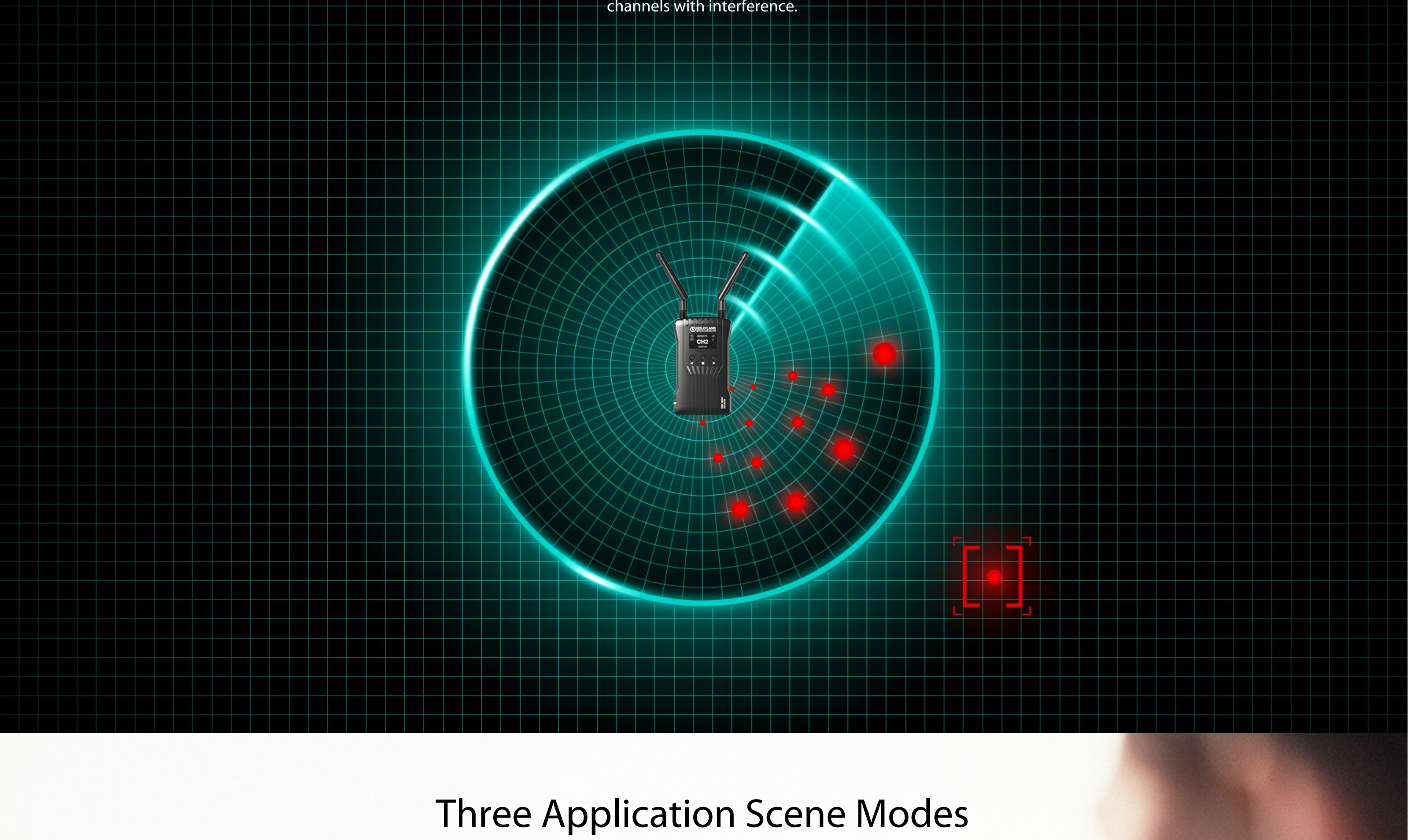
## iQS & Android APP Monitoring

Support up to 4 APP connections while the transmitter is connected to 1 or none receivers.



## Channel Scan

Scan current environment on the receiver to find out available channels and avoid the channels with interference.

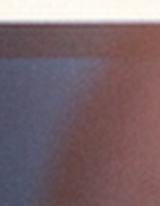


## Three Application Scene Modes

Prioritize your video shooting over video quality, or low latency, or the balance between the both when there is interference.



Image Mode



Balance Mode

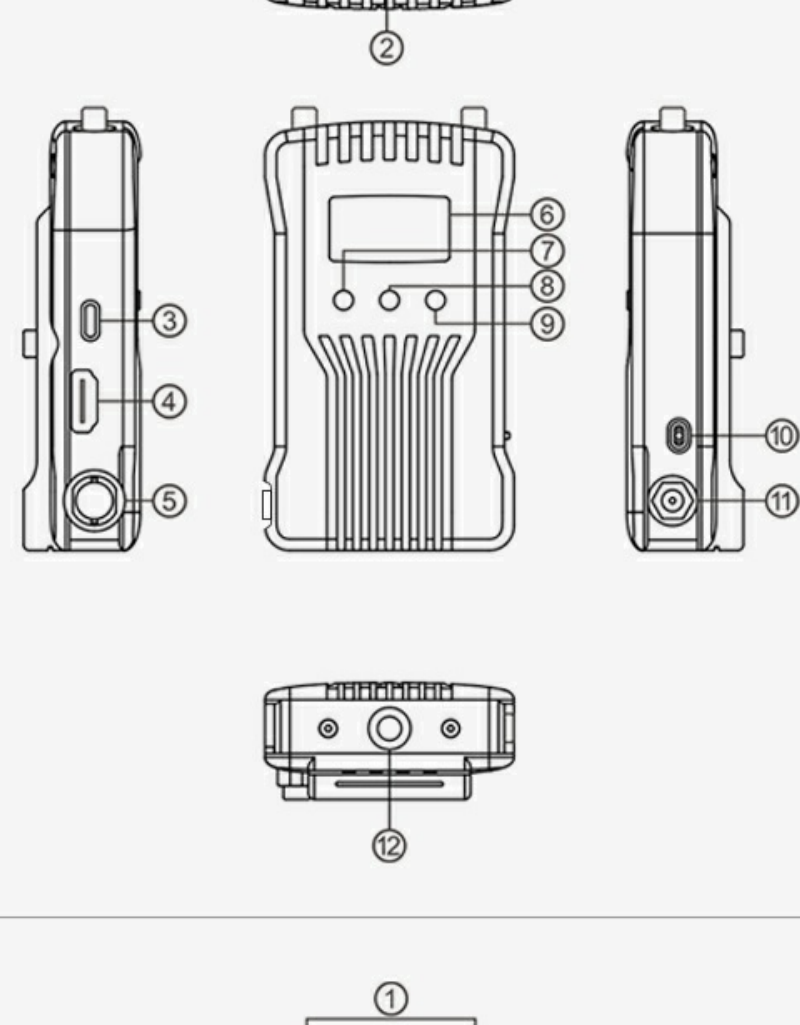


Speed Mode



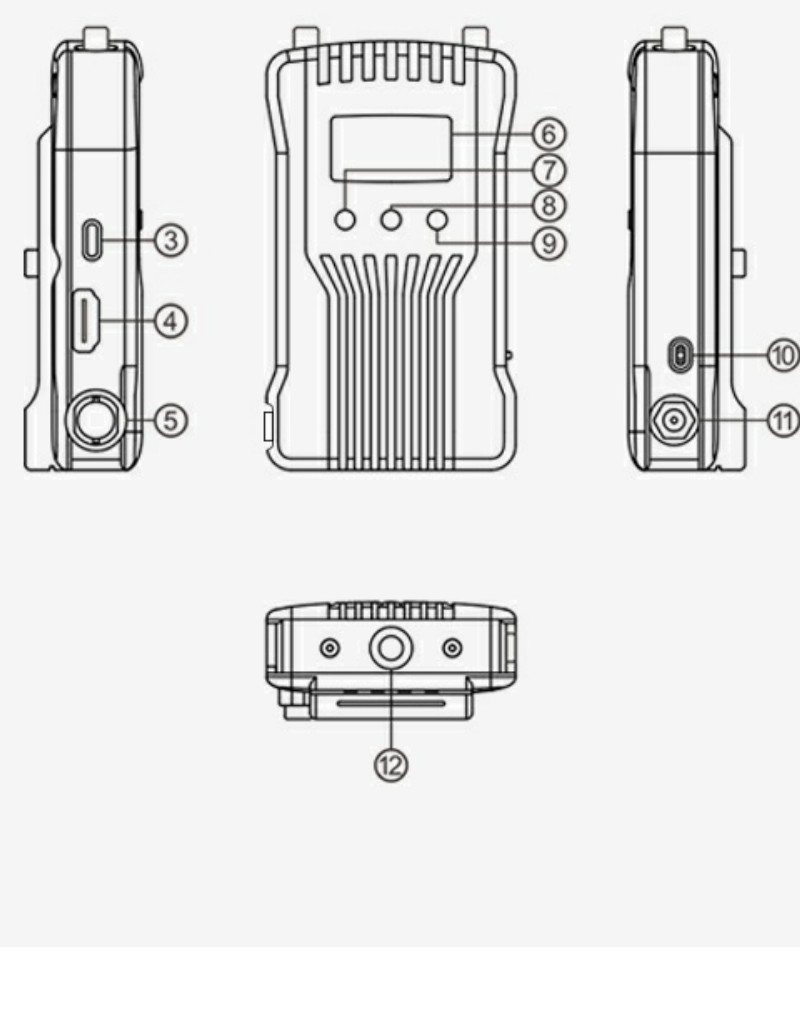
## HDMI+SDI Interfaces

Provide HDMI and SDI devices connection options.



### Transmitter

- ① Antenna Interface (RP-SMA Male)
- ② Fan Air Outlet
- ③ USB Type-C Interface
- ④ HDMI Input
- ⑤ SDI Input
- ⑥ OLED Display Screen
- ⑦ Down
- ⑧ Menu/OK
- ⑨ Up
- ⑩ Power Switch
- ⑪ DC Input
- ⑫ 1/4 Screw Hole



### Receiver

- ① Antenna Interface (RP-SMA Male)
- ② Fan Air Outlet
- ③ USB Type-C Interface
- ④ HDMI Output
- ⑤ SDI Output
- ⑥ OLED Display Screen
- ⑦ Down
- ⑧ Menu/OK
- ⑨ Up
- ⑩ Power Switch
- ⑪ DC Input
- ⑫ 1/4 Screw Hole

	Transmitter	Receiver
Interface	HDMI Input (Type A Female) SDI Input 2 Antenna Interfaces (RP-SMA Male) DC Input, Type-C USB	HDMI Output (Type A Female) SDI Output 2 Antenna Interfaces (RP-SMA Male) DC Input, Type-C USB
Power Consumption	<11W	<6W
Weight	192g	189g
Input / Output Video Format	HDMI: 480p60 576p50 720p50/59.94/60 1080i50/59.94/60 1080p23.98/24/25/29.97/30 1080P50/59.94/60 SDI: 1080P60/59.94/50(Level A) 1080P60/59.94/50(Level B) 1080i60/59.94/50 1080P30/29.97/25/24/23.98 1080P50/59.94/50 1080P50/59.94/50 1080P50/59.94/50 1080P50/59.94/50	HDMI: 480P60 576P50 720P50/60 1080i50/60 1080P24/25/30 1080P 50/60 SDI: 1080P60/50(Level A) 1080i60/50 1080P30/25/24 720P60/50 1080i50(1080P50/24/23.98 Input) 1080i60(1080P50/29.97 Input)
Transmission Power	Maximum 21dBm	/
Receiver Sensitivity	/	-80dBm
Power Supply Range	6-16V DC	
Size	112*65*23.5mm (L*W*H) External antennas and battery plate excluded	
Modulation Mode	OFDM	
Frequency	5GHz	
Transmission Latency	Less than 0.1s	
Bandwidth	20MHz	